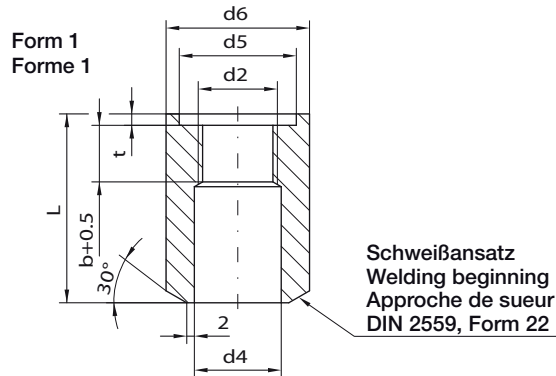


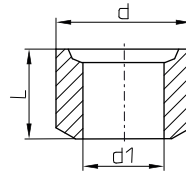
Schweißstutzen für Schutzrohre Welding adaptor for thermowell Raccord à souder pour doigts de gant



Schweißstutzen Form 1 für Schutzrohr nach DIN 43772, Form 5, 6, 7, 8 und 9
Welding adaptor form 1 for Thermowell DIN 43772, form 5, 6, 7, 8 and 9
Raccord à souder forme 1 pour doigts de gant selon DIN 43772, forme 5, 6, 7, 8 et 9

Material Material Matière	Werkstoffnummer DIN	Material-N° AISI / SAE	N° du matière AFNOR	Bestell-Nr. Order-N°. N° de commande	d2	d4	d5	d6	b	t	L
					mm						
CrNi-Stahl	1.4571	316 Ti	Z6 CNDT 17-12	401522	G1/2	22	27	40	14	3	50
13CrMo44	1.7335	A 182 F11	15 CD 4-05	412965							
10CrMo9.10	1.7380	A 182 F22	10 CD 9-10	412966							
C22.8	1.0460	SA 105	BF 42	407181							
15Mo3	1.5415	A 204 Gr.A	15 D 3	412967							
CrNi-Stahl	1.4571	316 Ti	Z6 CNDT 17-12	401523	G3/4	28	33	45	16	4	
13CrMo44	1.7335	A 182 F11	15 CD 4-05	412968							
10CrMo9.10	1.7380	A 182 F22	10 CD 9-10	412969							
C22.8	1.0460	SA 105	BF 42	407182							
15Mo3	1.5415	A 204 Gr.A	15 D 3	412970							
CrNi-Stahl	1.4571	316 Ti	Z6 CNDT 17-12	401524	G1	34	40	55	16	4	
13CrMo44	1.7335	A 182 F11	15 CD 4-05	412971							
10CrMo9.10	1.7380	A 182 F22	10 CD 9-10	412972							
C22.8	1.0460	SA 105	BF 42	407664							
15Mo3	1.5415	A 204 Gr.A	15 D 3	412973							
CrNi-Stahl	1.4571	316 Ti	Z6 CNDT 17-12	395884	G1/2	22	27	40	15	3	90
ST 52-3	1.0570	1024 ; 1524	E 36-3	410104							
CrNi-Stahl	1.4571	316 Ti	Z6 CNDT 17-12	404627	G3/4	28	33	45	16	4	
ST 52-3	1.0570	1024 ; 1524	E 36-3	404625							
CrNi-Stahl	1.4571	316 Ti	Z6 CNDT 17-12	395885	G1	34	40	55	30	4	
ST 52-3	1.0570	1024 ; 1524	E 36-3	410105							
ST 52-3	1.0570	1024 ; 1524	E 36-3	421891	G1½	50	56	80	35	4	50
CrNi-Stahl	1.4571	316 Ti	Z6 CNDT 17-12	406357	G1/2	22	27	40	14	3	110
15Mo3	1.5415	A 204 Gr.A	15 D 3	422297	G3/4	28	33	45	16	4	100

Form 2
Forme 2



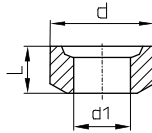
Schweißstutzen Form 2 für Schutzrohr nach DIN 16179, Form BS
Welding adaptor form 2 for Thermowell DIN 16179, form BS
Raccord à souder forme 2 pour doigts de gant selon DIN 16179, forme BS

Material Material Matière	Werkstoff Nr. DIN	Material-N° AISI / SAE	N° du matière AFNOR	Bestell-Nr. Order-N°. N° de commande	d1	d	L
					mm		
CrNi-Stahl	1.4571	316 Ti	Z6 CNDT 17-12	409101	30	55	35
13CrMo44	1.7335	A 182 F11	15 CD 4-05	409102			
10CrMo9.10	1.7380	A 182 F22	10 CD 9-10	409103			
C 22.8	1.0460	SA 105	BF 42	409104			
15Mo3	1.5415	A 204 Gr.A	15 D 3	412974			
CrNi-Stahl	1.4571	316 Ti	Z6 CNDT 17-12	409375	36	60	40
13CrMo44	1.7335	A 182 F11	15 CD 4-05	409376			
10CrMo9.10	1.7380	A 182 F22	10 CD 9-10	409377			
C 22.8	1.0460	SA 105	BF 42	409378			
15Mo3	1.5415	A 204 Gr.A	15 D 3	412976			

Standt: 25. 10. 2023

Schweißstutzen für Schutzrohre Welding adaptor for thermowell Raccord à souder pour doigts de gant

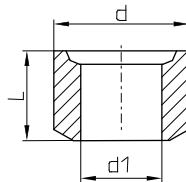
Form 3
Forme 3



Schweißstutzen Form 3 für Schutzrohr nach DIN 16179, Form CS
Welding adaptor form 3 for Thermowell DIN 16179, form CS
Raccord à souder forme 3 pour doigts de gant selon DIN 16179, forme CS

Material Material Matière	Werkstoff Nr. DIN	Material-N° AISI / SAE	N° du matière AFNOR	Bestell-Nr. Order-N°. N° de commande	d1	d mm	L
CrNi-Stahl	1.4571	316 Ti	Z6 CNDT 17-12	409105	24	45	25
13CrMo44	1.7335	A 182 F11	15 CD 4-05	409106			
10CrMo9.10	1.7380	A 182 F22	10 CD 9-10	409107			
C 22.8	1.0460	SA 105	BF 42	409108			
15Mo3	1.5415	A 204 Gr.A	15 D 3	412977			
CrNi-Stahl	1.4571	316 Ti	Z6 CNDT 17-12	409379	30	55	
13CrMo44	1.7335	A 182 F11	15 CD 4-05	409380			
10CrMo9.10	1.7380	A 182 F22	10 CD 9-10	409381			
C 22.8	1.0460	SA 105	BF 42	409382			
15Mo3	1.5415	A 204 Gr.A	15 D 3	412978			

Form 4
Forme 4



Schweißstutzen Form 4 für Schutzrohr nach DIN 43772, Form 4
Welding adaptor form 4 for Thermowell DIN 43772, form 4
Raccord à souder forme 4 pour doigts de gant selon DIN 43772, forme 4

Material Material Matière	Werkstoff Nr. DIN	Material-N° AISI / SAE	N° du matière AFNOR	Bestell-Nr. Order-N°. N° de commande	d1	d mm	L
CrNi-Stahl	1.4571	316 Ti	Z6 CNDT 17-12	415116	18	40	50
13CrMo44	1.7335	A 182 F11	15 CD 4-05	415117			
10CrMo9.10	1.7380	A 182 F22	10 CD 9-10	409289			
C 22.8	1.0460	SA 105	BF 42	415118			
15Mo3	1.5415	A 204 Gr.A	15 D 3	412519			
CrNi-Stahl	1.4571	316 Ti	Z6 CNDT 17-12	409078	24	45	
13CrMo44	1.7335	A 182 F11	15 CD 4-05	409079			
10CrMo9.10	1.7380	A 182 F22	10 CD 9-10	409080			
C 22.8	1.0460	SA 105	BF 42	409081			
15Mo3	1.5415	A 204 Gr.A	15 D 3	412520			
CrNi-Stahl	1.4571	316 Ti	Z6 CNDT 17-12	419089	26	50	
13CrMo44	1.7335	A 182 F11	15 CD 4-05	419090			
10CrMo9.10	1.7380	A 182 F22	10 CD 9-10	419091			
C 22.8	1.0460	SA 105	BF 42	419092			
15Mo3	1.5415	A 204 Gr.A	15 D 3	412521			
CrNi-Stahl	1.4571	316 Ti	Z6 CNDT 17-12	409082	30	55	
13CrMo44	1.7335	A 182 F11	15 CD 4-05	409083			
10CrMo9.10	1.7380	A 182 F22	10 CD 9-10	409084			
C 22.8	1.0460	SA 105	BF 42	409085			
15Mo3	1.5415	A 204 Gr.A	15 D 3	412522			
CrNi-Stahl	1.4571	316 Ti	Z6 CNDT 17-12	419093	32	55	
13CrMo44	1.7335	A 182 F11	15 CD 4-05	419094			
10CrMo9.10	1.7380	A 182 F22	10 CD 9-10	419095			
C 22.8	1.0460	SA 105	BF 42	419096			
15Mo3	1.5415	A 204 Gr.A	15 D 3	412522			
CrNi-Stahl	1.4571	316 Ti	Z6 CNDT 17-12	419097	36	60	
13CrMo44	1.7335	A 182 F11	15 CD 4-05	419098			
10CrMo9.10	1.7380	A 182 F22	10 CD 9-10	419099			
C 22.8	1.0460	SA 105	BF 42	419100			

Stand: 25. 10. 2023