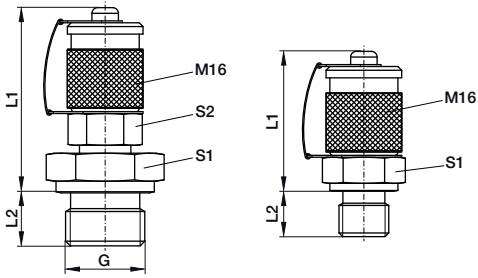
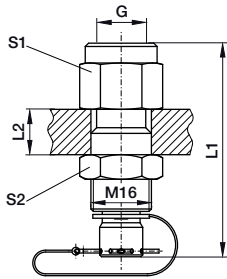


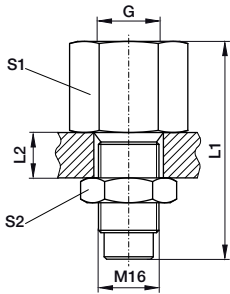
# Messanschluss Measuring adaptor Raccord de mesure



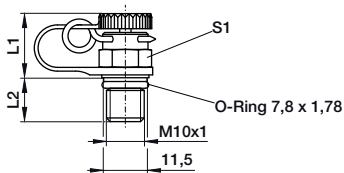
Manometerschraubkupplung Pressure gauge screwing coupling Embrayage visser								
Bestell-Nr. Order N° N° de commande	G	L1	L2	S1	S2	Form form forme	PN bar	T <sub>max</sub> °C
Stahl steel acier								
414601	G1/8	39,0	8,0	17	-	D	400	- 20 +200
414443	G1/4	37,0	12,0	19	-	D		
414602	G3/8	37,0	12,0	22	-	D		
414603	G1/2	49,0	14,0	17	17	E		



Manometersteckkupplung Pressure gauge plug coupling Embrayage de fixation								
Bestell-Nr. Order N° N° de commande	G	L1	L2	S1	S2	PN bar	T <sub>max</sub> °C	
Stahl steel acier								
396438	G1/4	61,5	12,0	19	19	400	- 20 +200	
414587	G1/2	72,0	12,0	27	19			



Manometerschraubkupplung Pressure gauge screwing coupling Embrayage visser								
Bestell-Nr. Order N° N° de commande	G	L1	L2	S1	S2	PN bar	T <sub>max</sub> °C	
Stahl steel acier								
	1.4571 316Ti Z6 CNDT 17-12							
395650	-	G1/4	53	10	19	22	400	- 20 +200
395649	-	G1/2	65	10	27	22		
-	417288	G1/2	65	10	27	22		



Manometerschraubkupplung Pressure gauge screwing coupling Embrayage visser							
Bestell-Nr. Order N° N° de commande	mm					PN bar	T <sub>max</sub> °C
Stahl steel acier	G	L1	L2	S1			
414525	M10x1	17,5	8,5	12	400	-25.....+120	

Stand: 24. 10. 2023