

Differenzdruckmessgerät mit Kapselfedersystem

Differential pressure gauge with capsule element

Manomètres capsule pour pression différentielle

DK10

• Anwendung

Für nicht aggressive, gasförmige und trockene Messstoffe. Der Messbereich ist gemäß dem maximal auftretendem Differenzdruck zu wählen.

• Service intended

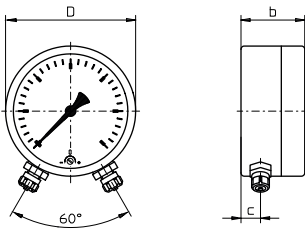
Suitable for all gaseous and liquid media that will not obstruct the pressure system. Scale range must be selected in consideration of the highest static pressure applied.

• Utilisation

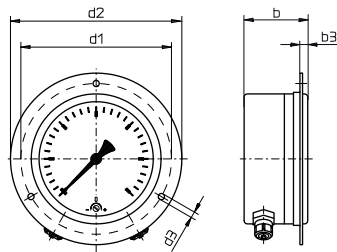
Pour fluides gazeux et liquides, non visqueux et non cristallisants. L'étendue de mesure est à choisir en rapport à la pression maxi prévue.



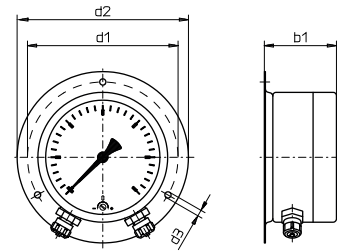
Technische Daten	Technical Data	Caractéristiques techniques
Ausführung ähnlich EN 837-3	Construction similarly EN 837-3	Construction de façon semblable EN 837-3
Gehäuse Ø 100 und 160 mm, Edelstahl	Case Ø 100 und 160 mm, stainless steel	Boîtier Ø 100 und 160 mm, acier inox
Schutzart IP 68 nach EN 60529 / IEC 529	Degree of protection IP 68 per EN 60529 / IEC 529	Degré de protection IP 68 selon EN 60529 / IEC 529
Anschluss 2 x Schlauchverschraubung, Ø 6 mm mit + und - markiert	Pressure connection 2 x Tubeconnection, Ø 6 mm identified + and -	Raccord pression 2 x raccord pour tuyaux flexibles, Ø 6 mm repérés par + et -
Messorgan Kapselfeder aus Kupferlegierung	Pressure element Capsule, copper alloy	Organe moteur Capsule en alliage de cuivre
Zeigerwerk Grund- und Deckplatte aus Messing Laufteile aus Neusilber	Movement Base and cover plate, brass Drive shaft, nickel silver	Mouvement Platines, laiton Axiale, argentan
Zeiger Aluminium, schwarz	Pointer Aluminium, black	Aiguille Duralumin, noir
Zifferblatt Aluminium, weiß Skala und Beschriftung schwarz	Dial Aluminium, white Scale and lettering black	Cadran Duralumin, blanc Échelle et graduation en noir
Sichtscheibe Mehrschichten-Sicherheitsglas	Window Laminated safety glass	Voyant Verre de sécurité feuilleté
Nullpunkteinstellung Verstellschraube im Zifferblatt	Zero point adjustment Adjusting screw in dial	Correction du zéro Vis de réglage sur le cadran
Genauigkeitsklasse 1,6	Accuracy class 1,6	Précision 1,6
Temperatureinfluss T_{Ref} 20°C Temperaturzunahme : +0,3% FS / 10K Temperaturabnahme : - 0,3% FS / 10K	Temperature error T_{ref} 20°C Rising temperature : +0,3% of FS value / 10 K Falling temperature : -0,3% of FS value / 10 K	Influence de la température T_{ref} 20°C Hausse des températures: +0,3% de l'EM/10 K Baisse des températures: -0,3% de l'EM/10 K
Umgebungstemperatur T _{min} / T _{max} - 25 ... + 60°C	Ambient temperature T _{min} / T _{max} - 25 ... + 60°C	Température ambiante T _{mini} / T _{maxi} - 25 ... + 60°C
Messstofftemperatur T _{max} +100°C	Medium temperature T _{max} +100°C	Température du fluide T _{maxi} +100°C
Überlastbarkeit < 25 mbar : 6 x Skalenendwert > 25 mbar : 10 x Skalenendwert	Working pressure < 25 mbar : 6 x full scale value > 25 mbar : 10 x full scale value	Plages d'utilisation < 25 mbar : 6 x de fin d'échelle > 25 mbar : 10 x de fin d'échelle
Statischer Druck Ø 100 mm : maximal 600 mbar Ø 160 mm : maximal 400 mbar	Static pressure rating Ø 100 mm : maximum 600 mbar Ø 160 mm : maximum 400 mbar	Pression statique Ø 100 mm : 600 mbar maximal Ø 160 mm : 400 mbar maximal
ii Ergänzungen siehe Tabelle Seite 04.0504	ii Optional extras see table page 04.0504	ii Options Voir tableau page 04.0504



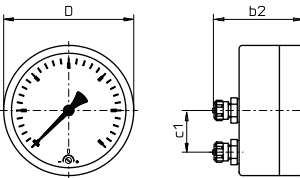
Typ DK10.U.1.N...
Anschluss unten
bottom pressure entry
raccord en bas



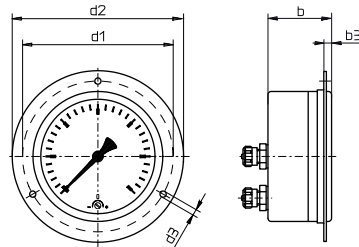
Typ DK10.U.2.N...
Rand vorne
panel mounting flange
collerette avant



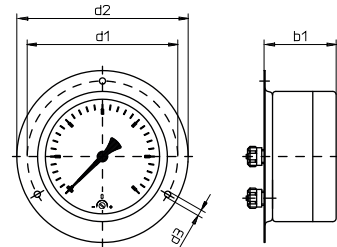
Typ DK10.U.3.N...
Rand hinten
surface mounting flange
rebord arrière



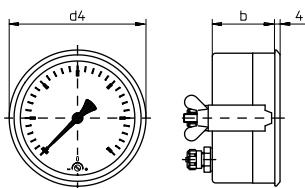
Typ DK10.H.1.N...
Anschluss hinten
back pressure entry
raccord arrière



Typ DK10.H.2.N...
Rand vorne
panel mounting flange
collerette avant



Typ DK10.H.3.N...
Rand hinten
surface mounting flange
rebord arrière



Typ DK10.H.4.N... *)
Dreikantfrontring
triangular bezel
collerette avant triangulaire


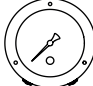

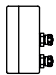

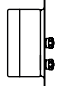
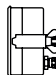
NG	b	b2	b3	c	c1	D	d1	d2	d3	d4	Tafelausschnitt panel cut-out découpe du panneau		kg
100	50	68,5	6	15	29	100	116	132	4,8	107	105	*) 103	0,5
160	50	68,5	6	14,5	50	160	178	196	5,8	166	165	*) 163	1,1




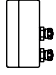
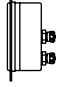
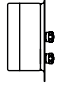
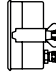
Differenzdruckmessgerät mit Kapselfedersystem

Differential pressure gauge with capsule element

Manomètres capsule pour pression différentielle

DK10

Typ	DK10.U.1.N100	DK10.U.2.N100	DK10.U.3.N100	DK10.H.1.N100	DK10.H.2.N100	DK10.H.3.N100	DK10.H.4.N100
Ø 100mm							
Anzeigebereich, mbar Scale range, mbar Etendues de mesure, mbar	Bestell-Nr. Order-N°. N° de commande						
- 25 ... 0 ... + 15	116091	116113	116135	116157	116179	116201	116223
- 20 ... 0 ... + 40	116092	116114	116136	116158	116180	116202	116224
- 40 ... 0 ... + 20	116093	116115	116137	116159	116181	116203	116225
- 10 ... 0	116094	116116	116138	116160	116182	116204	116226
- 16 ... 0	116095	116117	116139	116161	116183	116205	116227
- 25 ... 0	116096	116118	116140	116162	116184	116206	116228
- 40 ... 0	116097	116119	116141	116163	116185	116207	116229
- 60 ... 0	116098	116120	116142	116164	116186	116208	116230
- 100 ... 0	116099	116121	116143	116165	116187	116209	116231
- 160 ... 0	116100	116122	116144	116166	116188	116210	116232
- 250 ... 0	116101	116123	116145	116167	116189	116211	116233
- 400 ... 0	116102	116124	116146	116168	116190	116212	116234
0 ... 10	116103	116125	116147	116169	116191	116213	116235
0 ... 16	116104	116126	116148	116170	116192	116214	116236
0 ... 25	116105	116127	116149	116171	116193	116215	116237
0 ... 40	116106	116128	116150	116172	116194	116216	116238
0 ... 60	116107	116129	116151	116173	116195	116217	116239
0 ... 100	116108	116130	116152	116174	116196	116218	116240
0 ... 160	116109	116131	116153	116175	116197	116219	116241
0 ... 250	116110	116132	116154	116176	116198	116220	116242
0 ... 400	116111	116133	116155	116177	116199	116221	116243
0 ... 600	116112	116134	116156	116178	116200	116222	116244

Typ	DK10.U.1.N160	DK10.U.2.N160	DK10.U.3.N160	DK10.H.1.N160	DK10.H.2.N160	DK10.H.3.N160	DK10.H.4.N160
Ø 160mm							
Anzeigebereich, mbar Scale range, mbar Etendues de mesure, mbar	Bestell-Nr. Order-N°. N° de commande						
- 25 ... 0 ... + 15	116245	116269	116293	116317	116341	116365	116389
- 20 ... 0 ... + 40	116246	116270	116294	116318	116342	116366	116390
- 40 ... 0 ... + 20	116247	116271	116295	116319	116343	116367	116391
- 6 ... 0	116248	116272	116296	116320	116344	116368	116392
- 10 ... 0	116249	116273	116297	116321	116345	116369	116393
- 16 ... 0	116250	116274	116298	116322	116346	116370	116394
- 25 ... 0	116251	116275	116299	116323	116347	116371	116395
- 40 ... 0	116252	116276	116300	116324	116348	116372	116396
- 60 ... 0	116253	116277	116301	116325	116349	116373	116397
- 100 ... 0	116254	116278	116302	116326	116350	116374	116398
- 160 ... 0	116255	116279	116303	116327	116351	116375	116399
- 250 ... 0	116256	116280	116304	116328	116352	116376	116400
- 400 ... 0	116257	116281	116305	116329	116353	116377	116401
0 ... 6	116258	116282	116306	116330	116354	116378	116402
0 ... 10	116259	116283	116307	116331	116355	116379	116403
0 ... 16	116260	116284	116308	116332	116356	116380	116404
0 ... 25	116261	116285	116309	116333	116357	116381	116405
0 ... 40	116262	116286	116310	116334	116358	116382	116406
0 ... 60	116263	116287	116311	116335	116359	116383	116407
0 ... 100	116264	116288	116312	116336	116360	116384	116408
0 ... 160	116265	116289	116313	116337	116361	116385	116409
0 ... 250	116266	116290	116314	116338	116362	116386	116410
0 ... 400	116267	116291	116315	116339	116363	116387	116411
0 ... 600	116268	116292	116316	116340	116364	116388	116412

Stand: 24. 10. 2023

DK10

Differenzdruckmessgerät mit Kapselfedersystem
Differential pressure gauge with capsule element
Manomètres capsule pour pression différentielle

Ergänzungs Artikel Optional extras Options	Ø 100	Ø 160
	Bestell-Nr. Order-N°. N° de commande	
über- und unterdrucksicher < 25 mbar 3-fach, > 25 mbar 10-fach Overpressure and vacuum safe < 25 mbar 3-times, > 25 mbar 10-times résistant aux surpressions et au vide < 25 mbar 3 fois, > 25 mbar 10 fois	395506	395506
Messsystem gereinigt für Sauerstoff Degreased pressure element for oxygen Organe moteur dégraissé pour oxygène	395501	395501
Frontring schwarz lackiert Bezel black finish Lunette peinte en noir	395004	395037
rote Marke auf dem Zifferblatt Red mark on dial Trait rouge sur le cadran	395026	395026

Stand: 24. 10. 2023

11/2010