

Druckmessgerät mit Kapselfedersystem

Capsule pressure gauge

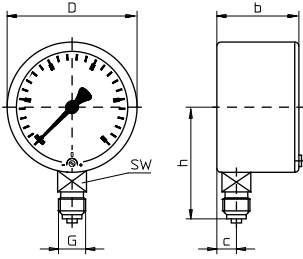
Manomètres capsule

K20

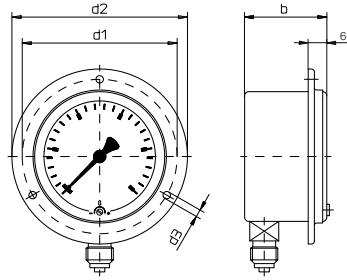
- **Anwendung**
Für aggressive, gasförmige und trockene Messstoffe.
- **Service intended**
Suitable for aggressive, gaseous and dry media.
- **Utilisation**
Pour fluides gazeux et liquides, agressifs.



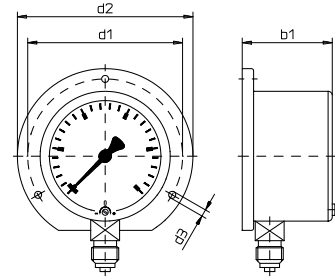
Technische Daten	Technical Data	Caractéristiques techniques
Ausführung EN 837-3 - S1	Construction EN 837-3 - S1	Version EN 837-3 - S1
Gehäuse Ø 60, 100 und 160 mm, Edelstahl mit Ausblasvorrichtung	Case Ø 60, 100 und 160 mm, stainless steel with pressure relief	Boîtier Ø 60, 100 et 160 mm, acier inox avec évent de sécurité
Schutzart IP 54 nach EN 60529 / IEC 529	Degree of protection IP 54 per EN 60529 / IEC 529	Degré de protection IP 54 selon EN 60529 / IEC 529
Anschluss Ø 60 mm : G1/4B, Edelstahl 1.4404 Ø 100 und 160 mm: G1/2B, Edelstahl 1.4404	Pressure connection Ø 60 mm : G1/4B, st.st. 316L Ø 100, and 160 mm : G1/2B, st.st. 316L	Raccord pression Ø 60 mm : G1/4B, acier inox Z6 CND 17-11-02 Ø 100, et 160 mm : G1/2B, acier inox Z6 CND 17-11-02
Messorgan Edelstahl 1.4571, lasergeschweißt	Pressure element Stainless steel 316Ti, Laser welded	Organe moteur Acier inox Z6 CNDT 17-12, Laser soudé
Zeigerwerk Edelstahl	Movement Stainless steel	Mouvement Acier inox
Zeiger Aluminium, schwarz	Pointer Aluminium, black	Aiguille Duralumin, noir
Zifferblatt Aluminium, weiß Skala und Beschriftung schwarz	Dial Aluminium, white Black scale and lettering	Cadran Duralumin, blanc échelle et graduation en noir
Sichtscheibe Ø 60 mm : Acrylglas Ø 100, 160 mm : Mehrschicht- Sicherheitsglas	Window Ø 60 mm : Acrylic glass Ø 100, 160 mm : Laminated safety glass	Voyant Ø 60 mm : verre acrylique Ø 100, 160 mm : verre de sécurité feuilleté
Nullpunkteinstellung Verstellschraube im Zifferblatt	Zero point adjustment Adjusting screw in dial	Correction du zéro Vis de réglage sur le cadran
Genauigkeitsklasse 1,6	Accuracy class 1,6	Précision 1,6
Temperatureinfluss, T_{ref} 20°C Temperaturzunahme : +0,3% FS / 10K Temperaturabnahme : - 0,3% FS / 10K	Temperature error, T_{ref} 20°C Rising temperature : +0,3 % of FS value / 10 K Falling temperature : -0,3 % of FS value / 10 K	Influence de la température T_{ref} 20°C Hausse des températures: +0,3% de l'EM/10 K Baisse des températures : -0,3% de l'EM/10 K
Umgebungstemperatur T _{min} / T _{max} - 25 ... + 60°C	Ambient temperature T _{min} / T _{max} - 25 ... + 60°C	Température ambiante T _{mini} / T _{maxi} - 25 ... + 60°C
Messstofftemperatur T _{max} +100°C	Medium temperature T _{max} +100°C	Température du fluide T _{maxi} +100°C
Überlastbarkeit < 25 mbar : 6 x Skalenendwert > 25 mbar : 10 x Skalenendwert	Overpressure < 25 bar : 6 x full scale value > 25 bar : 10 x full scale value	Supression < 25 mbar : 6 x de fin d'échelle > 25 mbar : 10 x de fin d'échelle
Ergänzungen siehe Tabelle Seite 03.0205	Optional extras See table page 03.0205	Options voir tableau page 03.0205



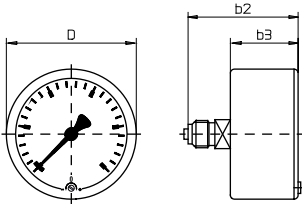
Typ K20.U.1.N60
Anschluss unten
bottom pressure entry
raccord en bas



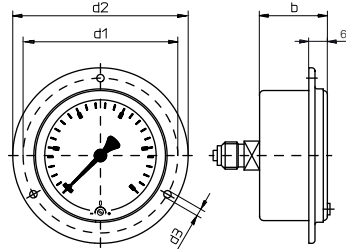
Typ K20.U.2.N60
Rand vorne
panel mounting flange
collerette avant



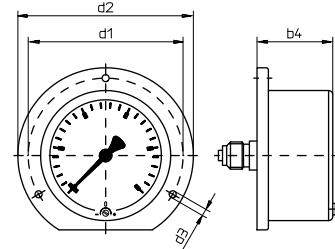
Typ K20.U.3.N60
Rand hinten
surface mounting flange
rebord arrière



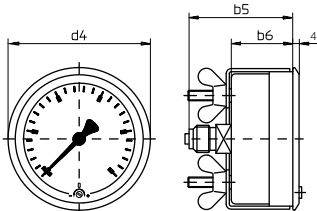
Typ K20.H.1.N60
Anschluss hinten
back pressure entry
raccord arrière



Typ K20.H.2.N60
Rand vorne
panel mounting flange
collerette avant



Typ K20.H.3.N60
Rand hinten
surface mounting flange
rebord arrière



Typ K20.H.4.N60 *)
Dreikantfrontring
triangular bezel
collerette avant triangulaire

NG	b	b1	b2	b3	b4	b5	b6	c	D	d1	d2	d3	d4	G	h	SW	Tafelausschnitt panel cut-out découpe du panneau	1)		
	mm																	kg		
60	42	46	55	35	36	57	37	11	62	75	85	3,5	67	G¼B	54	14	65	*) 63	0,12	0,35

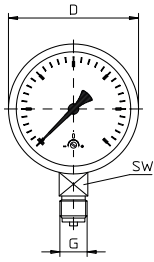
1) Gewicht mit Glycerinfüllung
Weight with glycerin filling
Poids avec remplissage de glycérine

Druckmessgerät mit Kapselfedersystem

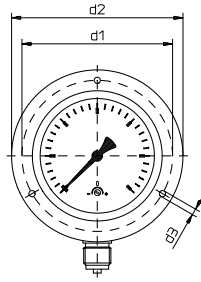
Capsule pressure gauge

Manomètres capsule

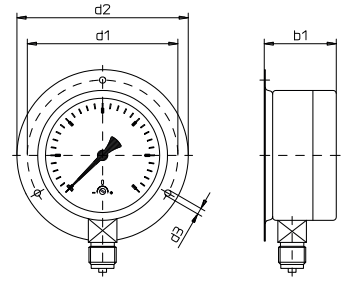
K20



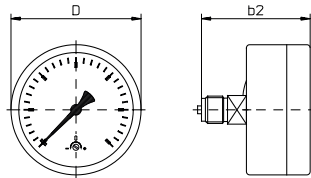
Typ K20.U.1.N...
Anschluss unten
bottom pressure entry
raccord en bas



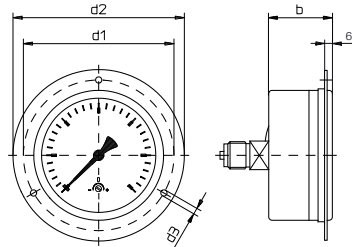
Typ K20.U.2.N...
Rand vorne
panel mounting flange
collerette avant



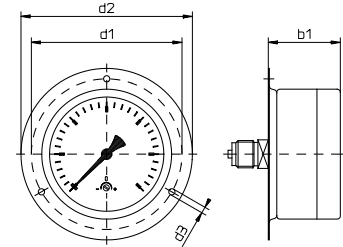
Typ K20.U.3.N...
Rand hinten
surface mounting flange
rebord arrière



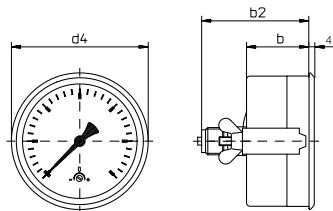
Typ K20.H.1.N...
Anschluss hinten
back pressure entry
raccord arrière



Typ K20.H.2.N...
Rand vorne
panel mounting flange
collerette avant



Typ K20.H.3.N...
Rand hinten
surface mounting flange
rebord arrière



Typ K20.H.4.N... *)
Dreikantfrontring
triangular bezel
collerette avant triangulaire

NG	b	b1	b2	c	D	d1	d2	d3	d4	G	h	SW	Tafelausschnitt panel cut-out découpe du panneau		1)	
													mm		kg	
100	50	56	86,5	15	100	116	132	4,8	107	G½B	87	22	105	*) 103	0,50	0,80
160	50	56	88	14,5	160	178	196	5,8	166		118		165	*) 163	1,10	1,95

Stand: 24. 10. 2023

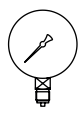


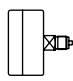
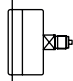
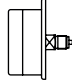
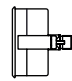
1) Gewicht mit Glycerinfüllung
Weight with glycerin filling
Poids avec remplissage de glycérine




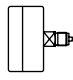
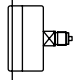
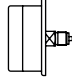
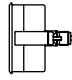
K20

Druckmessgerät mit Kapselfedersystem

Capsule pressure gauge

Manomètres capsule

Typ	K20.U.1.N60	K20.U.2.N60	K20.U.3.N60	K20.H.1.N60	K20.H.2.N60	K20.H.3.N60	K20.H.4.N60
Ø 60mm							
Anzeigebereich, mbar Scale range, mbar Etendues de mesure, mbar	Bestell-Nr. Order-N°. N° de commande						
- 25 ... 0 ... + 15	107341	107366	107391	107416	107441	107462	107487
- 20 ... 0 ... + 40	107342	107367	107392	107417	107442	107463	107488
- 40 ... 0 ... + 20	107343	107368	107393	107418	107443	107464	107489
- 25 ... 0	107347	107372	107397	107422	107447	107468	107493
- 40 ... 0	107348	107373	107398	107423	107448	107469	107494
- 60 ... 0	107349	107374	107399	107424	107449	107470	107495
- 100 ... 0	107350	107375	107400	107425	107450	107471	107496
- 160 ... 0	107351	107376	107401	107426	107354	107472	107497
- 250 ... 0	107352	107377	107402	107427	106984	107473	107498
- 400 ... 0	107353	107378	107403	107428	107404	107474	107499
0 ... 25	107358	107383	107408	107433	107454	107479	107504
0 ... 40	107359	107384	107409	107434	107455	107480	107505
0 ... 60	107360	107385	107410	107435	107456	107481	107506
0 ... 100	107361	107386	107411	107436	107457	107482	107507
0 ... 160	107362	107387	107412	107437	107458	107483	107508
0 ... 250	107363	107388	107413	107438	107459	107484	107509
0 ... 400	107364	107389	107414	107439	107460	107485	107510
0 ... 600	107365	107390	107415	107440	107461	107486	107511

Typ	K20.U.1.N100	K20.U.2.N100	K20.U.3.N100	K20.H.1.N100	K20.H.2.N100	K20.H.3.N100	K20.H.4.N100
Ø 100mm							
Anzeigebereich, mbar Scale range, mbar Etendues de mesure, mbar	Bestell-Nr. Order-N°. N° de commande						
- 25 ... 0 ... + 15	107512	107537	107562	107587	107612	107637	107662
- 20 ... 0 ... + 40	107513	107538	107563	107588	107613	107638	107663
- 40 ... 0 ... + 20	107514	107539	107564	107589	107614	107639	107664
- 10 ... 0	107516	107541	107566	107591	107616	107641	107666
- 16 ... 0	107517	107542	107567	107592	107617	107642	107667
- 25 ... 0	107518	107543	107568	107593	107618	107643	107668
- 40 ... 0	107519	107544	107569	107594	107619	107644	107669
- 60 ... 0	107520	107545	107570	107595	107620	107645	107670
- 100 ... 0	107521	107546	107571	107596	107621	107646	107671
- 160 ... 0	107522	107547	107572	107597	107622	107647	107672
- 250 ... 0	107523	107548	107573	107598	107623	107648	107673
- 400 ... 0	107524	107549	107574	107599	107624	107649	107674
0 ... 10	107527	107552	107577	107602	107627	107652	107677
0 ... 16	107528	107553	107578	107603	107628	107653	107678
0 ... 25	107529	107554	107579	107604	107629	107654	107679
0 ... 40	107530	107555	107580	107605	107630	107655	107680
0 ... 60	107531	107556	107581	107606	107631	107656	107681
0 ... 100	107532	107557	107582	107607	107632	107657	107682
0 ... 160	107533	107558	107583	107608	107633	107658	107683
0 ... 250	107534	107559	107584	107609	107634	107659	107684
0 ... 400	107535	107560	107585	107610	107635	107660	107685
0 ... 600	107536	107561	107586	107611	107636	107661	107686

Stand: 24. 10. 2023

Druckmessgerät mit Kapselfedersystem

Capsule pressure gauge

Manomètres capsule

K20

Typ	K20.U.1.N160	K20.U.2.N160	K20.U.3.N160	K20.H.1.N160	K20.H.2.N160	K20.H.3.N160	K20.H.4.N160
Ø 160mm							
Anzeigebereich, mbar Scale range, mbar Etendues de mesure, mbar	Bestell-Nr. Order-N°. N° de commande						
- 25 ... 0 ... + 15	107687	107712	107737	107762	107787	107812	107837
- 20 ... 0 ... + 40	107688	107713	107738	107763	107788	107813	107838
- 40 ... 0 ... + 20	107689	107714	107739	107764	107789	107814	107839
- 6 ... 0	107690	107715	107740	107765	107790	107815	107840
- 10 ... 0	107691	107716	107741	107766	107791	107816	107841
- 16 ... 0	107692	107717	107742	107767	107792	107817	107842
- 25 ... 0	107693	107718	107743	107768	107793	107818	107843
- 40 ... 0	107694	107719	107744	107769	107794	107819	107844
- 60 ... 0	107695	107720	107745	107770	107795	107820	107845
- 100 ... 0	107696	107721	107746	107771	107796	107821	107846
- 160 ... 0	107697	107722	107747	107772	107797	107822	107847
- 250 ... 0	107698	107723	107748	107773	107798	107823	107848
- 400 ... 0	107699	107724	107749	107774	107799	107824	107849
0 ... 6	107701	107726	107751	107776	107801	107826	107851
0 ... 10	107702	107727	107752	107777	107802	107827	107852
0 ... 16	107703	107728	107753	107778	107803	107828	107853
0 ... 25	107704	107729	107754	107779	107804	107829	107854
0 ... 40	107705	107730	107755	107780	107805	107830	107855
0 ... 60	107706	107731	107756	107781	107806	107831	107856
0 ... 100	107707	107732	107757	107782	107807	107832	107857
0 ... 160	107708	107733	107758	107783	107808	107833	107858
0 ... 250	107709	107734	107759	107784	107809	107834	107859
0 ... 400	107710	107735	107760	107785	107810	107835	107860
0 ... 600	107711	107736	107761	107786	107811	107836	107861

Ergänzungsartikel Optional extras Options	Ø60	Ø100	Ø160
	Bestell-Nr. Order-N°. N° de commande		
Über-/ unterdrucksicher (< 25 mbar 3-fach, > 25 mbar 10-fach)	395510	395510	395510
Overpressure and vacuum safe (< 25 mbar 3-times, > 25 mbar 10-times)			
Résistant aux surpressions et au vide (< 25 mbar 3-fois, > 25 mbar 10-fois)			
Messsystem gereinigt für Sauerstoff	395501	395501	395501
Degreased pressure element for oxygen			
Organe moteur dégraissé pour oxygène			
Drosselschraube im Anschlusszapfen 0,8 mm Ø	395108	395107	395107
Restrictor screw in connector 0,8 mm dia.			
Vis frein de 0,8 mm dans le raccord			
Frontring poliert	395100	395112	395113
Bezel polished			
Lunette polie			
rote Marke auf dem Zifferblatt	395074	395026	395026
Red mark on dial			
Trait rouge sur le cadran			
Gehäuse mit ausblasbarer Rückwand	-	395514	395516
Blow-out back			
Paroi arrière éjectable			
Zündschutzart	104101	104101	104101
Intrinsic safety	II 2G Ex h IIC T6...T1 Gb X		
Sécurité intrinsèque	II 2D Ex h IIIC T6...T1 Db X		

Stand: 24. 10. 2023

